

# Understanding glaucoma

## What is glaucoma?

This is the name for a group of eye conditions in which the optic nerve (at the back of the eye) is damaged.

## How does the damage usually happen?

By increased pressure from fluid in the eye. The amount of damage depends on the amount of pressure and how long it has lasted.

## Chronic glaucoma

The danger with chronic glaucoma (slow onset) is that your eyesight may seem perfectly normal. There is no pain, but your peripheral vision (side vision) is being damaged. Eventually your central vision is affected. At this stage we describe it as 'tunnel' vision (like looking down a long tube).

## How is chronic glaucoma detected?

The tests are very straightforward. Most optometrists (opticians) do them by:

- viewing the optic nerve at the back of the eye with a special light
- measuring the pressure in the eye
- checking the peripheral (side) vision.

## Who is most at risk of chronic glaucoma?

- People over the age of 40.
- People of African-Caribbean origin earlier than age 40.
- People with a close relative who has chronic glaucoma.
- Very short-sighted people.
- People with diabetes.

## How is chronic glaucoma treated?

Treatment aims to reduce the pressure in the eye. It will be done in hospital and usually starts with eye drops. You will need regular checks afterwards. You may need an operation if the eye drops do not work.

## Acute glaucoma

In acute glaucoma (sudden onset), the pressure in your eye rises rapidly and can be very painful.

The affected eye may become red and you may suffer nausea and vomiting. In the early stages, you may see rainbow-coloured rings around white lights.

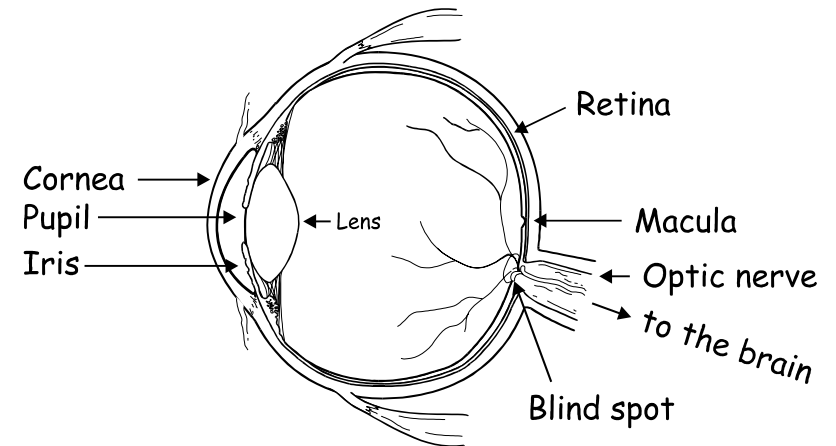
### What is the treatment?

Your family doctor or optometrist should send you to hospital immediately so that the pain and pressure in your eye can be relieved. An acute attack, if treated early, can usually be brought under control in a few hours. Delay may cause permanent damage to your vision.

A free interpreting service is available if you need help with this information. Please telephone Stockport English Language Service on 0161-477 9000
এই তথ্যের ব্যাপারে আপনার যদি কোন সাহায্য সবেযোগিতার প্রয়োজন হয় তবে আপনার জন্য দ্রুত যোগাযোগ করা হবে। যোগাযোগের ইকোপোর্ট ইংলিশ সার্ভিসের সার্ভিসে 0161-477 9000 এই নম্বরে যোগাযোগ করুন।
اگر آپ کو اس سطور کے ساتھ کسی ضرورت ہے (مثلاً ترجمانی کی ضرورت ہے) یا کسی اور سہولت کی ضرورت ہے تو براہ کرم اس سروس پر 0161-477 9000 پر فون کریں۔
如您需要他人為你解釋這份資料的內容，我們可提供免費的傳譯服務，請致電史托模英語服務：0161-477 9000
تتوفر خدمة ترجمة شفهية مجانية إذا تطلبت مساعدة في فهم هذه المعلومات. نرجو الاتصال بخدمة تعليم اللغة الانجليزية في ستوكبورت على رقم الهاتف: 0161-477 9000
এই তথ্যের ব্যাপারে আপনি যদি সাহায্যের প্রয়োজন হলে দ্রুত যোগাযোগ করা হবে। যোগাযোগের ইকোপোর্ট ইংলিশ সার্ভিসের সার্ভিসে 0161-477 9000 নম্বরে যোগাযোগ করুন।

# Glaucoma

## Patient Information Leaflet



Stockport Primary Care Trust  
and  
Stockport Optometrists



June 2002

Published by  
Stockport Primary Care Trust  
Stockport Local Optometric Committee